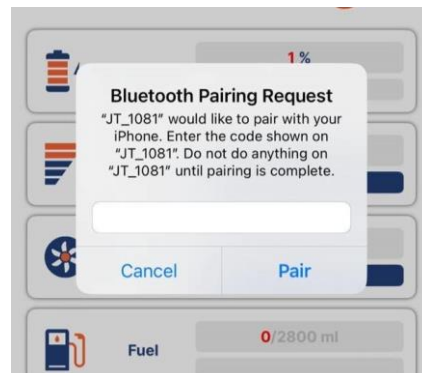
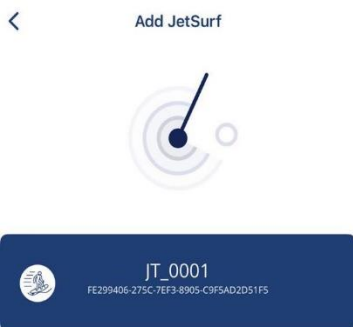


MY SURF CONNECT – iPhone Manual

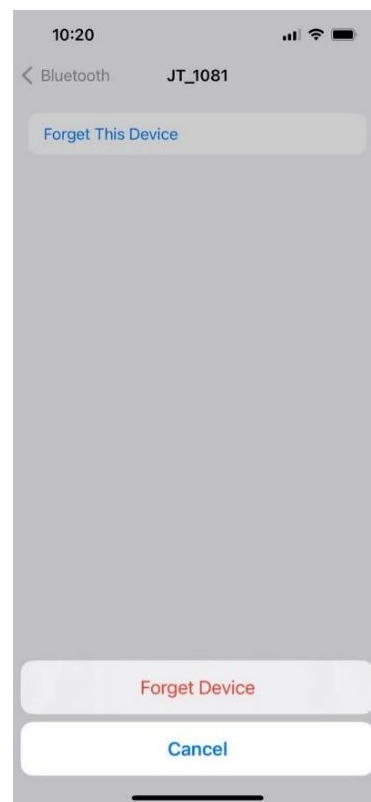
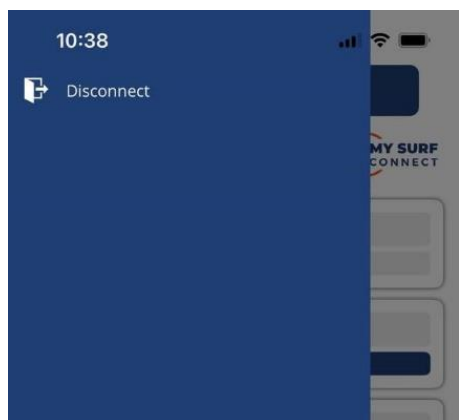
Installation & Pairing

The **MySurfConnect** app is available for download on the Apple Store. See www.mysurfconnect.com or scan the QR code on the MySurfConnect device.



- Install and run the MySurfConnect App.
- To connect to your JetSurf click on the "Add JetSurf" button.
- Activate your JetSurf to idle mode and select your JetSurf in the list of JetSurfs available for connection.
- To connect to the device, you need to pair your phone with the device. The password is "123456".

Disconnect & Remove Pairing



- To **disconnect** from the board, just click on the icon in the top left corner. You can select "Disconnect" in the sidebar.
- Alternatively, just turn off the app and the next time you connect, you'll connect to the device automatically.
- To remove the pairing, you need to place magnet in the middle of the MySurfConnect device for **7 seconds** (count 7 flashes of the JetSurf indicator).
- If you want to connect the same or another iPhone to the device later, you need to go to the Bluetooth settings select "ignore device" via the icon.
- Now all you have to do is open MySurfConnect again, turn on JetSurf, search for a new device and pair again.





Choose your JetSurf



HINT

There are two possible JetSurf name colors:

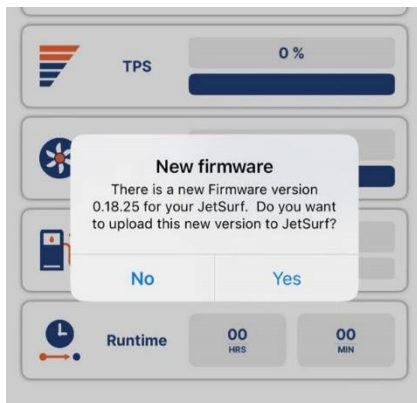
BLUE = active device / ready to connect

RED = not active / device out of the communication range

- From the information page, the device will automatically dump you to the front page after unpairing. Here, drag the selected device to the left and click on the trash icon.

Update

We are always working on new features and improvements, so it may happen that when you connect to the device, the system will automatically offer you an upgrade to the new firmware. We recommend keeping your device updated.



- To complete the update an internet connection is necessary.
- Please, wait until the update is complete. After the update, the device will automatically return you to the main page.



- ✓ Init
- ✓ Validate
- ⏸ Upload
- ⌚ Confirm
- ⌚ Reset



CAUTION

- We recommend that you do not lock or turn off your phone during the update.
- If the JetSurf shuts down during the update process you need to turn the JetSurf on again and repeat the update.

